



Imagine being a
MILLION
MILES *away*



TREMFYA® is a prescription medicine used to treat adults and children 6 years and older who also weigh at least 88 pounds (40 kg) with moderate to severe plaque psoriasis who may benefit from taking injections or pills (systemic therapy) or phototherapy (treatment using ultraviolet or UV light).

SELECTED IMPORTANT SAFETY INFORMATION

TREMFYA® is not for everyone; only your healthcare provider can decide if it's right for you. Do not use if you are allergic to TREMFYA®. TREMFYA® is a prescription medicine that may cause serious side effects, including serious allergic reactions, infections, and liver problems. TREMFYA® affects your immune system. It may increase your risk of infections and lower your ability to fight them. Please read the Important Safety Information on page 9 and the Medication Guide for TREMFYA® to learn more about these and other risks for TREMFYA®. Discuss any questions you have with your healthcare provider.

FDA-approved for adults with moderate to severe plaque psoriasis since 2017

TREMFYA® is the first FDA-approved medication of its kind to selectively block IL-23.

90% clearer skin

At 16 weeks

In clinical studies, at least **7 out of 10 patients** saw at least **90% clearer skin**.

At 48 weeks

In a clinical study, nearly **9 out of 10 patients** who saw **90% clearer skin at 28 weeks** continued to see **90% clearer skin at 48 weeks**.

At 5 years

In a study, nearly **7 out of 10 patients** with **90% clearer skin at 16 weeks** were **still clearer at 5 years**. At 1 year and thereafter, patients and healthcare providers knew that TREMFYA® was being used. This may have increased results. Results may vary.

[See results](#)

Improves symptoms

In clinical studies at 16 weeks, patients had improvement in symptoms such as:



Itching



Skin tightness



Burning



Stinging



Pain

Completely clear skin

In one clinical study, 5 out of 10 patients saw completely clear skin or were rated as clear at 16 weeks.

Results you can see



Actual patient

Week 0
before TREMFYA®

Week 16
after 3 doses

Week 48
after 7 doses

Photos are of a real patient with moderate to severe plaque psoriasis who received TREMFYA® 100 mg at weeks 0 and 4, and then every 8 weeks.

Individual results may vary.

[See more photos](#)

TREMFYA® is a prescription medicine also approved for adults with active psoriatic arthritis

SELECTED IMPORTANT SAFETY INFORMATION

TREMFYA® is not for everyone; only your healthcare provider can decide if it's right for you. Do not use if you are allergic to TREMFYA®. TREMFYA® is a prescription medicine that may cause serious side effects, including serious allergic reactions, infections, and liver problems. TREMFYA® affects your immune system. It may increase your risk of infections and lower your ability to fight them. Please read the [Important Safety Information](#) on page 9 and the [Medication Guide for TREMFYA®](#) to learn more about these and other risks for TREMFYA®. Discuss any questions you have with your healthcare provider.

Clearer skin is possible across all skin tones

In a study across all skin tones,* **nearly 6 out of 10 patients saw 90% clearer skin at 16 weeks**. Results may vary.

*Refers to a dermatology skin tone scale.

In a group of patients with moderate to severe scalp psoriasis, **6 out of 10 patients had at least 90% scalp clearance with nearly all of them 100% clear at 16 weeks**. Results may vary.

[See results across skin tones](#)

SELECTED IMPORTANT SAFETY INFORMATION

TREMFYA[®] is not for everyone; only your healthcare provider can decide if it's right for you. Do not use if you are allergic to TREMFYA[®]. TREMFYA[®] is a prescription medicine that may cause serious side effects, including serious allergic reactions, infections, and liver problems. TREMFYA[®] affects your immune system. It may increase your risk of infections and lower your ability to fight them. Please read the [Important Safety Information](#) on page 9 and the [Medication Guide](#) for TREMFYA[®] to learn more about these and other risks for TREMFYA[®]. Discuss any questions you have with your healthcare provider.



First-of-its-kind study across all skin tones

Minority representation has been less than 30% in plaque psoriasis biologic treatment trials. That's why we launched a first-of-its-kind study across all skin tones.*

*Refers to a dermatology skin tone scale.



See the difference

Psoriasis can look different across skin tones and may impact receiving an accurate diagnosis.



You're always included

We're committed to conducting innovative clinical research that includes patients with different skin tones.

Real patients. Real results across all skin tones

In a clinical study across all skin tones,* nearly 6 out of 10 patients saw 90% clearer skin at 16 weeks. Results may vary.

*Refers to a dermatology skin tone scale.

Photos are of real patients with moderate to severe plaque psoriasis who received a single dose of TREMFYA[®] 100 mg at weeks 0 and 4, and then every 8 weeks. Individual results may vary. TREMFYA[®] is intended for use under the guidance and supervision of a physician. Patients may self-inject after proper training and physician approval.

SELECTED IMPORTANT SAFETY INFORMATION

TREMFYA[®] is not for everyone; only your healthcare provider can decide if it's right for you. Do not use if you are allergic to TREMFYA[®]. TREMFYA[®] is a prescription medicine that may cause serious side effects, including serious allergic reactions, infections, and liver problems. TREMFYA[®] affects your immune system. It may increase your risk of infections and lower your ability to fight them. Please read the [Important Safety Information](#) on page 9 and the [Medication Guide](#) for TREMFYA[®] to learn more about these and other risks for TREMFYA[®]. Discuss any questions you have with your healthcare provider.

Before TREMFYA [®]	After 3 doses at week 16	Before TREMFYA [®]	After 3 doses at week 16
 <p>Identifies as — South American — (Hispanic/Latino)</p> <p>Legs</p>		 <p>Identifies as — South Asian — (Asian)</p> <p>Back</p>	
 <p>Identifies as — Mexican — (Hispanic/Latino)</p> <p>Elbow</p>		 <p>Identifies as — Black —</p> <p>Scalp</p>	
 <p>Identifies as — Mexican — (Hispanic/Latino)</p> <p>Leg</p>		 <p>Identifies as — Caribbean — (Black)</p> <p>Abdomen</p>	
 <p>Identifies as — South Asian — (Asian)</p> <p>Scalp</p>		 <p>Identifies as — Caribbean — (Black)</p> <p>Back</p>	

CHALLENGING AREAS

Small areas can have a big impact

Challenging areas have more sensitive skin and can be highly visible, like the face, scalp, skin folds, and genitals. A unique study with TREMFYA® showed that clearer skin is possible in patients with **low body surface area (BSA)** (2%-15%) moderate plaque psoriasis, and plaques in these challenging areas.



1 hand = 1% of your body surface area (BSA)

[See results](#)

SELECTED IMPORTANT SAFETY INFORMATION

TREMFYA® is not for everyone; only your healthcare provider can decide if it's right for you. Do not use if you are allergic to TREMFYA®. TREMFYA® is a prescription medicine that may cause serious side effects, including serious allergic reactions, infections, and liver problems. TREMFYA® affects your immune system. It may increase your risk of infections and lower your ability to fight them. Please read the [Important Safety Information](#) on page 9 and the [Medication Guide](#) for TREMFYA® to learn more about these and other risks for TREMFYA®. Discuss any questions you have with your healthcare provider.

In moderate plaque psoriasis

Clearer skin in challenging areas with low body surface area (BSA)*

In this study, at least 7 out of 10 patients were rated as clear or almost clear of their psoriasis at 16 weeks. Results may vary.

Challenging site results with at least moderate severity at 16 weeks:



Scalp

At least 7 out of 10 patients on TREMFYA® were rated as clear or almost clear of their scalp psoriasis.



Face

At least 8 out of 10 patients on TREMFYA® were rated as clear or almost clear of their facial psoriasis.



Genitals

At least 7 out of 10 patients on TREMFYA® were rated as clear or almost clear of their genital psoriasis.



Skin folds

At least 8 out of 10 patients on TREMFYA® were rated as clear or almost clear of psoriasis in skin fold areas.

Results may vary.

*Low BSA in this study was defined as 2%-15%.

RESULTS

You deserve the chance to have clearer skin



See results in low-BSA* moderate plaque psoriasis and challenging areas

In this study, at least 7 out of 10 patients were rated as clear or almost clear of their psoriasis at 16 weeks.

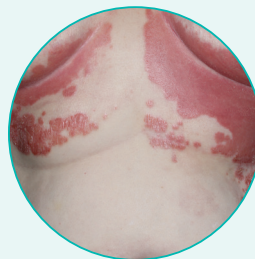
Photos are of real patients who received TREMFYA® 100 mg at weeks 0 and 4, and then every 8 weeks. Individual results may vary.

Before TREMFYA®

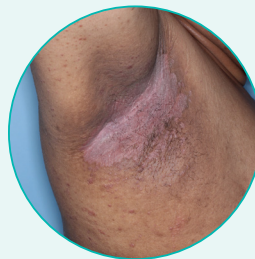
After 3 doses at week 16



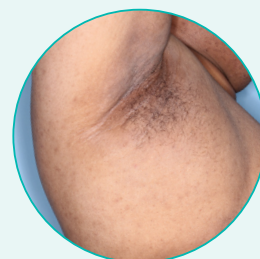
Scalp



Skin folds



Skin folds



SELECTED IMPORTANT SAFETY INFORMATION

TREMFYA® is not for everyone; only your healthcare provider can decide if it's right for you. Do not use if you are allergic to TREMFYA®. TREMFYA® is a prescription medicine that may cause serious side effects, including serious allergic reactions, infections, and liver problems. TREMFYA® affects your immune system. It may increase your risk of infections and lower your ability to fight them. Please read the [Important Safety Information](#) on page 9 and the [Medication Guide](#) for TREMFYA® to learn more about these and other risks for TREMFYA®. Discuss any questions you have with your healthcare provider.

[Learn more](#)

*Low BSA in this study was defined as 2%-15%.

6 doses per year after 2 starter doses*

First 52 weeks of therapy

2 starter doses at Week 0 and Week 4

6 maintenance doses

1 dose every 8 weeks

*For plaque psoriasis, TREMFYA[®] is a single-dose 100 mg injection taken under the skin at weeks 0 and 4, and then every 8 weeks.

If your healthcare provider decides that you or a caregiver may be able to give your injections of TREMFYA[®] at home, you should receive training on the right way to prepare and inject TREMFYA[®]. Do not try to inject yourself until you have been trained by your healthcare provider.

For children, TREMFYA[®] should be administered by a healthcare provider or an adult caregiver who has been shown the right way to give the injections by a healthcare provider.

SELECTED IMPORTANT SAFETY INFORMATION

TREMFYA[®] is not for everyone; only your healthcare provider can decide if it's right for you. Do not use if you are allergic to TREMFYA[®]. TREMFYA[®] is a prescription medicine that may cause serious side effects, including serious allergic reactions, infections, and liver problems. TREMFYA[®] affects your immune system. It may increase your risk of infections and lower your ability to fight them. Please read the [Important Safety Information](#) on page 9 and the [Medication Guide](#) for TREMFYA[®] to learn more about these and other risks for TREMFYA[®]. Discuss any questions you have with your healthcare provider.

The One-Press in 3D



Not actual size

A **patient-controlled self-injection** device that was created with you in mind. The **One-Press** device features an **easy-to-hold** design. And if you're not a fan of seeing needles, you're in luck: One-Press has a hidden needle feature so you won't see the needle unless you go looking for it.



The One-Press patient-controlled injector was awarded the Arthritis Foundation's Ease of Use seal after being tested by patients with psoriatic arthritis.

You can take TREMFYA[®] by using either the One-Press patient-controlled self-injector or a prefilled syringe.

Your first self-injection should be performed at your doctor's office so your doctor can show you the right way to give yourself the injections. After this training, and with your healthcare provider's approval, you may be able to inject at home.

One-Press is an easy-to-hold design that lets you control the injection. Push the handle all the way down to inject the full 100 mg dose.

Please read the [Instructions for Use](#) before using TREMFYA[®], and each time you get a refill. There may be new information. These instructions do not take the place of talking with your healthcare provider about your medical condition or your treatment.

Scan the code to see a live One-Press Injector



Data rates may apply.

1. Point your smartphone camera at the marker to get started
2. Rotate and zoom in on the One-Press with your fingers
3. Tap "See It Live" and experience the One-Press in 3D

ONCE YOU AND YOUR DOCTOR HAVE DECIDED THAT TREMFYA® IS RIGHT FOR YOU

Tremfya *withMe*

A SUPPORT PROGRAM BUILT AROUND YOU

Dedicated support throughout your TREMFYA® treatment journey

We're committed to making sure you have what you want, **when you want it**. Your treatment journey is about more than appointments and injections. **It's about you feeling supported.**



TREMFYA withMe Nurse Guide*

Meet your dedicated TREMFYA withMe Nurse Guide—a registered nurse—who will help you throughout your treatment journey with the support and information you may need.

*Nurse Guides do not provide medical advice. Please consult your doctor for any questions you have about your disease or therapy.



Prescription and Cost Support

You'll receive support to help you verify your insurance coverage, understand how to fill your prescriptions, and look for options that could make your treatment more affordable.



Treatment Support

You'll get access to information about your disease, injection support, and how to safely return used devices. Your doctor is the best person to help you understand what to expect. Your Nurse Guide is also available, after you have talked with your doctor, if you have questions about injections.

The support and resources provided by TREMFYA withMe are not intended to provide medical advice, replace a treatment plan you receive from your doctor or nurse, or serve as a reason for you to start or stay on treatment.

Learn more about TREMFYA withMe, a support program built around you

Visit tremfya.com for more information.



Data rates may apply.

Scan this QR code with your phone's camera

If you haven't signed up yet, **SCAN OR CALL:**

1-833-WITHME1 (948-4631)
Monday through Friday from
8:00 AM to 11:00 PM ET



Safe Returns®

If you've received approval to inject at home and have been properly trained, you can use Safe Returns® as a simple, safe, and convenient way to dispose of your used devices at no cost to you. After you sign up for TREMFYA withMe, you'll receive a certified Safe Returns® sustainable mail-back envelope in the mail, along with easy-to-follow mail-back instructions.

INDICATIONS

WHAT IS TREMFYA® (guselkumab)?

TREMFYA® is a prescription medicine used to treat adults and children 6 years and older who also weigh at least 88 pounds (40 kg) with moderate to severe plaque psoriasis who may benefit from taking injections or pills (systemic therapy) or phototherapy (treatment using ultraviolet or UV light).

TREMFYA® is a prescription medicine used to treat adults and children 6 years and older who also weigh at least 88 pounds (40 kg) with active psoriatic arthritis.

IMPORTANT SAFETY INFORMATION

What is the most important information I should know about TREMFYA®?

TREMFYA® is a prescription medicine that may cause serious side effects, including:

- **Serious Allergic Reactions.** Stop using TREMFYA® and get emergency medical help right away if you develop any of the following symptoms of a serious allergic reaction:
 - fainting, dizziness, feeling lightheaded (low blood pressure)
 - swelling of your face, eyelids, lips, mouth, tongue or throat
 - trouble breathing or throat tightness
 - chest tightness
 - skin rash, hives
 - itching
- **Infections.** TREMFYA® may lower the ability of your immune system to fight infections and may increase your risk of infections. Your healthcare provider should check you for infections and tuberculosis (TB) before starting treatment with TREMFYA® and may treat you for TB before you begin treatment with TREMFYA® if you have a history of TB or have active TB. Your healthcare provider should watch you closely for signs and symptoms of TB during and after treatment with TREMFYA®.

Tell your healthcare provider right away if you have an infection or have symptoms of an infection, including:

- fever, sweats, or chills
- muscle aches
- weight loss
- cough
- warm, red, or painful skin or sores on your body different from your psoriasis
- diarrhea or stomach pain
- shortness of breath
- blood in your phlegm (mucus)
- burning when you urinate or urinating more often than normal

- **Liver Problems.** With the treatment of plaque psoriasis or psoriatic arthritis, your healthcare provider may do blood tests to check your liver before and as necessary during treatment with TREMFYA®. Your healthcare provider may stop treatment with TREMFYA® if you develop liver problems. Tell your healthcare provider right away if you notice any of the following symptoms:

- unexplained rash
- vomiting
- tiredness (fatigue)
- yellowing of the skin or the whites of your eyes
- nausea
- stomach pain (abdominal)
- loss of appetite
- dark urine

Do not use TREMFYA® if you have had a serious allergic reaction to guselkumab or any of the ingredients in TREMFYA®.

Before using TREMFYA®, tell your healthcare provider about all of your medical conditions, including if you:

- have any of the conditions or symptoms listed in the section **“What is the most important information I should know about TREMFYA®?”**
- have an infection that does not go away or that keeps coming back.
- have TB or have been in close contact with someone with TB.
- have recently received or are scheduled to receive an immunization (vaccine). You should avoid receiving live vaccines during treatment with TREMFYA®. Children should be brought up to date with all vaccines before starting TREMFYA®.
- are pregnant or plan to become pregnant. It is not known if TREMFYA® can harm your unborn baby.
Pregnancy Registry: If you become pregnant during treatment with TREMFYA®, talk to your healthcare provider about registering in the pregnancy exposure registry for TREMFYA®. You can enroll by visiting www.mothersbaby.org/ongoing-study/tremfya-guselkumab, by calling 1-877-311-8972, or emailing MotherToBaby@health.ucsd.edu. The purpose of this registry is to collect information about the safety of TREMFYA® during pregnancy.
- are breastfeeding or plan to breastfeed. It is not known if TREMFYA® passes into your breast milk.

Tell your healthcare provider about all the medicines you take, including prescription and over-the-counter medicines, vitamins, and herbal supplements.

What are the possible side effects of TREMFYA®?

TREMFYA® may cause serious side effects. See “What is the most important information I should know about TREMFYA®?”

The most common side effects of TREMFYA® include: respiratory tract infections, headache, injection site reactions, joint pain (arthralgia), diarrhea, stomach flu (gastroenteritis), fungal skin infections, herpes simplex infections, stomach pain, bronchitis, feeling very tired (fatigue), fever (pyrexia), and skin rash (rash).

These are not all the possible side effects of TREMFYA®. Call your doctor for medical advice about side effects.

Use TREMFYA® exactly as your healthcare provider tells you to use it.

Please read the full Prescribing Information, including Medication Guide, for TREMFYA® and discuss any questions that you have with your doctor.

You are encouraged to report negative side effects of prescription drugs to the FDA. Visit www.fda.gov/medwatch, or call 1-800-FDA-1088.

TREMFYA® is available as a 100 mg/mL subcutaneous injection.
cp-510976v3

Learn more about TREMFYA[®]

For moderate to severe plaque psoriasis

Click to see the [Prescribing Information](#),
[Medication Guide](#), and [Instructions for Use](#).

SELECTED IMPORTANT SAFETY INFORMATION

TREMFYA[®] is not for everyone; only your healthcare provider can decide if it's right for you. Do not use if you are allergic to TREMFYA[®]. TREMFYA[®] is a prescription medicine that may cause serious side effects, including serious allergic reactions, infections, and liver problems. TREMFYA[®] affects your immune system. It may increase your risk of infections and lower your ability to fight them. Please read the [Important Safety Information](#) on page 9 and the [Medication Guide](#) for TREMFYA[®] to learn more about these and other risks for TREMFYA[®]. Discuss any questions you have with your healthcare provider.

At least 7 out of 10 patients saw 90% clearer skin at 16 weeks. Patients saw improvement in symptoms such as burning, stinging, and itching. Results may vary.

Real patients. Real stories.

Hear stories from real patients living with moderate to severe plaque psoriasis and the steps they took to get clearer skin. Individual results may vary.

Scan to hear Robyn and
Joe's stories and more.



Data rates
may apply.



*"I was hiding
behind filters."*

- Robyn

TREMFYA[®] patient

*"I had plaques all
over my back."*

- Joe

TREMFYA[®] patient



SELECTED IMPORTANT SAFETY INFORMATION

TREMFYA[®] is not for everyone; only your healthcare provider can decide if it's right for you. Do not use if you are allergic to TREMFYA[®]. TREMFYA[®] is a prescription medicine that may cause serious side effects, including serious allergic reactions, infections, and liver problems. TREMFYA[®] affects your immune system. It may increase your risk of infections and lower your ability to fight them. Please read the Important Safety Information on page 9 and the Medication Guide for TREMFYA[®] to learn more about these and other risks for TREMFYA[®]. Discuss any questions you have with your healthcare provider.